



Bantry Bay Port Company DAC

Harbour Office: Wolfe Tone Square, Bantry, Co. Cork, Ireland

Notice to Mariners No 1 2021

Note: This notice should be read in conjunction with BA Chart 1838

Mariners are advised that works are proceeding at the disused main Jetty on Whiddy Island, the purpose of the work is to stabilise and make safe the remaining jetty structure.

The workboat “*An tOileanach*” is on-site for the duration of works it will at all times display the lights and shapes as per the International Collision Regulations.

Mariners should be aware that the effect of wash may be felt at a distance from the source and should adjust their speed accordingly when navigating in the vicinity of the work site.

It is expected that works will continue for a period of 3 months, weather permitting.

Temporary buoyage has been deployed in the vicinity of the disused Jetty to alert mariners to keep clear of the work area and jetty. Mariners are advised to note the location of the buoyage and always keep clear of the works area.

All buoys have the following characteristics:

Special Mark Buoy (Lighted)

Colour: Yellow Character Fl Y 5s

Focal Height (metres) 1.5

Range (nautical miles) 2

Co-ordinates of temporary buoys

Special Mark 1

Latitude WGS84 51°41.193'N

Longitude WGS84 09°32.118'W

Special Mark 2

Latitude WGS84 51°41.223'N

Longitude WGS84 09°32.050'W

Special Mark 3

Latitude WGS84 51°41.255'N

Longitude WGS84 09°31.978'W

Special Mark 4

Latitude WGS84 51°41.142'N

Longitude WGS84 09°32.067'W

Special Mark 5

Latitude WGS84 51°41.172'N

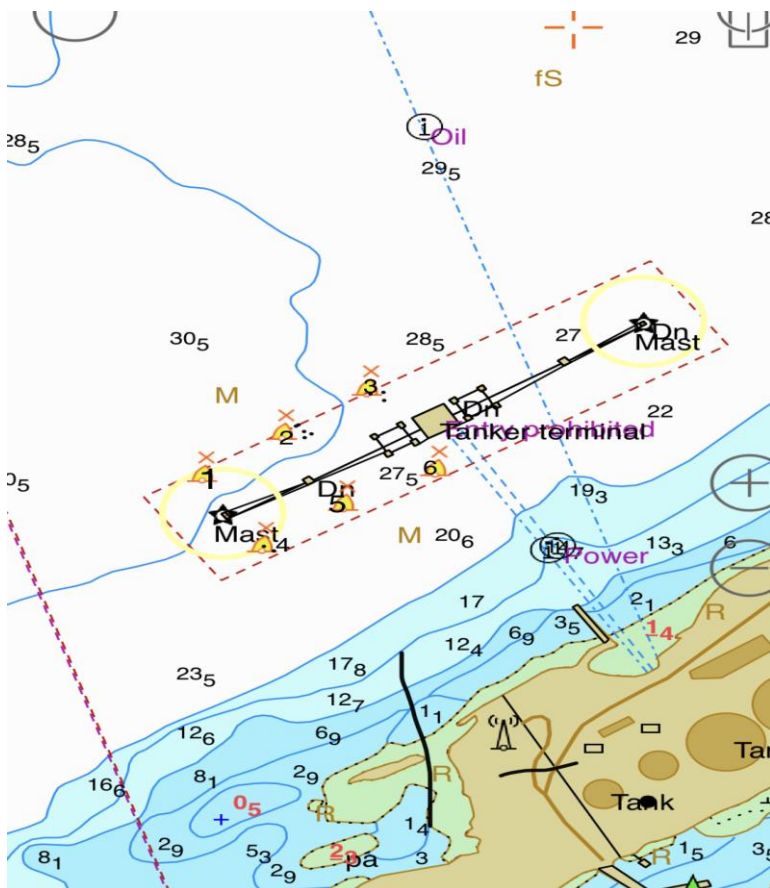
Longitude WGS84 09°31.998'W

Special Mark 6

Port Area

Latitude WGS84 51°41.197'N

Longitude WGS84 09°31.920'W



By Order

**Capt. Paul O Regan
Harbour Master
Harbour Office
Wolfe Tone Square
Bantry
Co Cork**